

## Water Soluble Designs! – mini-lesson for Workshops

Here I'm colouring a ready-made bag, so am applying Liquid Radiance through both layers .. and eventually need to colour the handle as well. DEFINITELY NO ARTISTIC SKILLS REQUIRED ... just a really simple 'scribble', followed by 'Five Finger Foam brush' technique, then the Water Soluble Resist applied straight from its applicator bottle.

MORE DETAIL: I'm using my favourite mix of  $\frac{1}{4}$  concentrate to  $\frac{3}{4}$  water



ABOVE: Tulips start off as eggs and lines in appropriate colours



RIGHT: Sky scribbled on. Colour mix is a bit strong but it's what I have ready at the time!  
Dilute the colours with more water for a softer sky.

The end result will be  
**TULIPS**

LEFT: Stage 2 – lime colour is scribbled on in lines – really adds a bit of 'zing'!



For plain fabrics (not bags) lay two pieces of fabric down one on top of the other. Wet them and squeeze out the water until no more drips come out. Spread them as evenly as you can onto a board ready to apply the colours.

It's a great way to produce a range of fabric that look amazing in any project as there are different 'representations' of the same fabric on each layer, and front and back, of the fabric when dry.



LEFT: Use gloved fingers to 'smudge' the colour and fill the design area. Left-hand side of bag is completed, right side yet to be done. Interesting to note the difference this step makes!



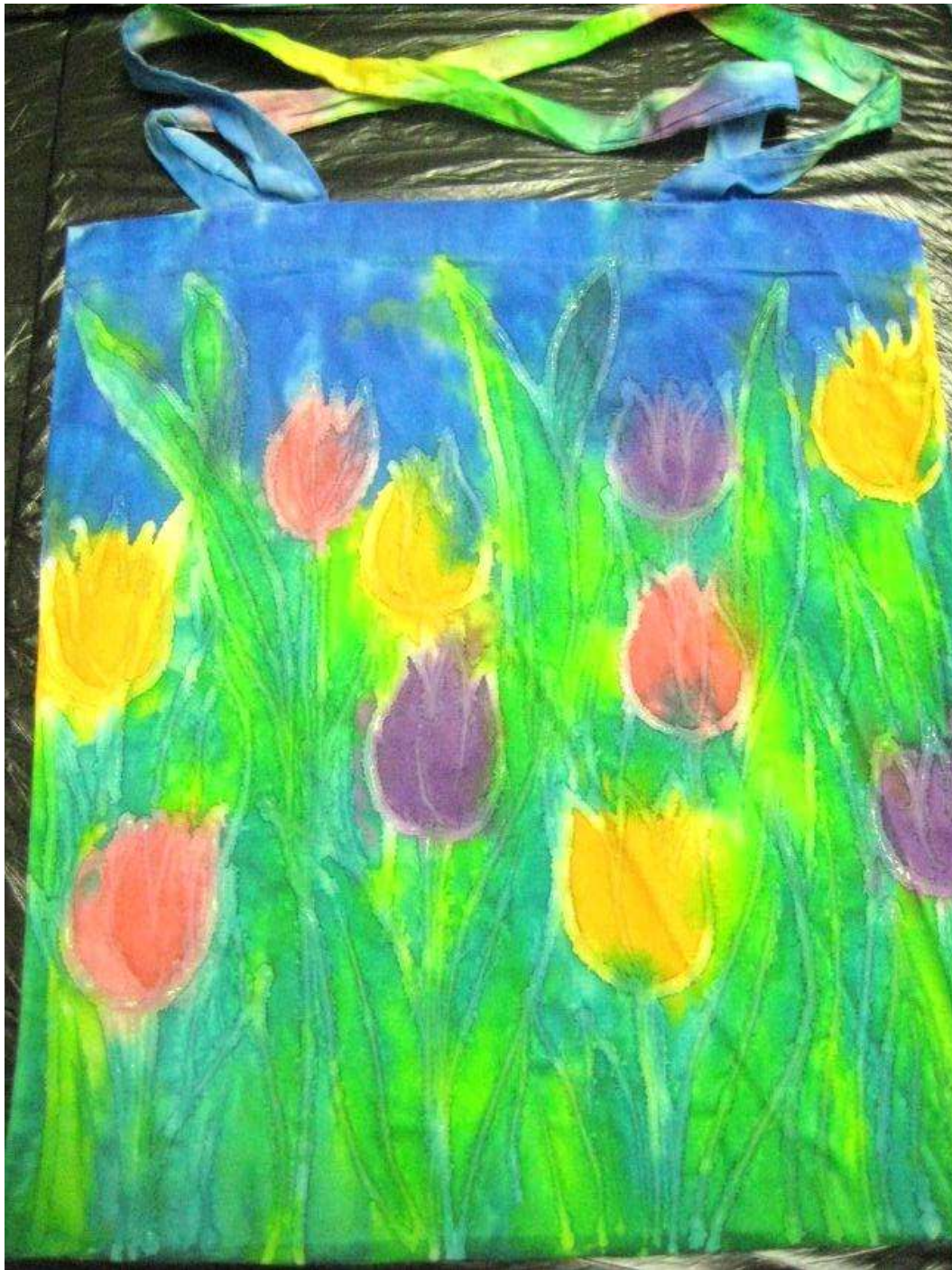
Because I'm working on a bag, handles must be coloured too. I have flipped them down onto the colours and pressed with my fingertips to blot up a bit of the design colours.

For plain fabrics (not bags) blot up with another piece of DRY absorbent fabric. (Note the water drop test ... and if the water beads, it is not suitable for this type of blot-up.)

Anne Mitchell  
Genesis Creations™ Owner  
PO Box 7901, Toowoomba South Q 4350  
Phone 0418 771 808  
E: [anne@genesiscreations.com.au](mailto:anne@genesiscreations.com.au)  
[www.genesiscreations.com.au](http://www.genesiscreations.com.au)

To avoid excess in the fabric, I've laid another bag on top and pressed it firmly to absorb excess colour from the main bag. Add more colour to the blot-up bag and scrunch it, using a technique that doesn't need a specific design. Can't waste that lovely colour ... and we know that excess is the enemy so we don't want that in our main 'work of art' either !!!





FINAL STEP: Draw on the Water Soluble Resist in lines to define the design you are creating ... line will be really gooey and look ... well ... nothing like the end result !!! It's even tricky to see the lines you've done on some colours. Just draw away, then leave it all to dry. It will take several hours. But it's definitely worth the wait.

The lines that looked wet and gooey when wet will be defined when dry. I just LOVE the way the colours 'migrate' into each other during the drying time (While there's moisture, there's movement). The end result will be nothing like the strange looking piece when you started!

When it's all totally dry, dunk the fabric into water to remove the water soluble resist

WS Resist lines are about the thickness of string when first applied. They will spread during drying time.

CLOSE-UP of  
bottom RH  
corner

