

Concepts ...

Student News and Notes – Summer '17/'18



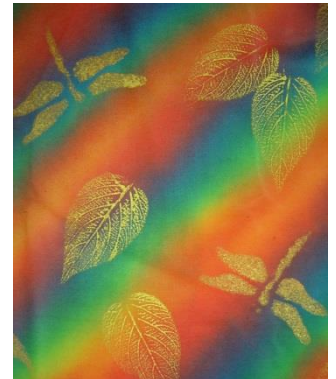
FROM: Anne Mitchell (Owner)
PO Box 2340, Toowoomba Q 4350
Mobile 0418 771 808
Email: anne@genesiscreations.com.au
Phone 07 4613 4426

Hi Fellow Teachers and Fabric-A Holics,

A little bit of History ... about me, and our Genesis Creations™ Business ...

I'm sure you've heard this before ... *Find a job that you love and you'll never have to work a day in your life.* It is one of the many wisdoms of Chinese philosopher Confucius hundreds of years ago. [He lived from 551 to 497 BC]. It is my pleasure to have found a 'job' like this. Starting out as a shop assistant when a teenager in my parents' watchmaking and jewellery store in the school holidays, I gained an appreciation of beautiful things and quality workmanship. Then after studying to become a high school teacher, grew to love the experiences of helping students to develop their own skills and knowledge. Fast forward many years, and here I am, still teaching ... but with a difference.

My interest in fabric painting developed when my daughters were very small, and I began teaching these skills through and Australian company way back then. That life came to an abrupt end in the 90s via a letter of closure in the mail; but the love of what I'd done for the previous 20 years spurred me on to find (or create) my OWN products so we could keep the good times happening. Creating them to my own requirements for quality and performance seemed to me the best option, and so began a wonderful relationship with our paint manufacturers in Sydney. My desire: to be able to have paints that are safe and simple to use, and economical for the benefit of everyone; and of course have these products made exclusively for us through our Genesis Creations™ business.



The fun of thinking differently! Liquid Radiance background, with leaf prints and stencilled dragonflies

Our paints and colours are **very different** from anything else 'out there' in the marketplace – that's why it's so important that you have my support, as well as that of our GC teachers, to help you make the most of their use, and achieve the effects that you want to create. It's great to think back to where it all started, and realise that with help from people who also cared about quality products, we have achieved what we started out to do 24 years ago.



Pictured before labels were put on so you can see the colours better!

Does our paint development and creative thinking stop there? NO WAY!

Yes, it's SOOO NICE to be DIFFERENT !!

In 2018 I'm excited to re-release our Flat Paint range with a whole new look! ... New colours in our Flats for Light Fabrics range, and a totally updated range of Flats for Dark Fabrics. The 'Flats for Dark' are designed to give super cover on all dark fabrics or surfaces. And all, of course, are totally washable and ironable, exclusively ours, and available only through us at Genesis Creations™.

"FLATS for DARK" COLOUR RANGE:

Left hand pic, L to R, top:

Violet, Yellow, Leaf Green, Red, Salmon Pink
Bottom row: Hot Pink, Pale Blue, Orange, Lime, White



Lots of New Techniques to Share with You in 2018 ...

Early in the year we conduct a series of training workshops with our GC Teachers to develop more new techniques and explore new ideas so we can show you even MORE creative things to do in our workshops and classes. If you're unable to attend our student workshops, personal help can come to you via email or phone calls.

Just starting out in Fabric Designing? Our workshop programs cater for you too, of course. See next page for details of where to find me in 2018, and when I could be coming your way. Check my website to keep up to date. And make sure your email address is in my contacts lists so I can send information relevant to you.

IMPORTANT CONTACTS

MOBILE 0418 771 808

EMAIL anne@genesiscreations.com.au

My mobile phone lives in my left pocket at all times, except when in bed or in the bath !!!

COMING EVENTS ... Where to find us at SHOWS in 2018 ...

World of Craft, Brisbane – 2nd till 4th March, at the Exhibition Building, RNA Showgrounds. You'll find us at Stand 40.

- Be among the first to see our brand new techniques on display
- Watch our demonstrations, and talk to us about your project ideas
- Participate in our FREE hands-on mini-workshops each day
- Attend my FREE seminar each morning

Check my website for more information.

Biennial Quilt Show, Port Macquarie – 13th till 15th July, in the Panthers Club auditorium. Enjoy our usual spectacular display, watch our demonstrations, and participate in the pop-up mini-workshops each day.

Home Economics Queensland Conference, Brisbane – 18th August, at Brisbane Convention Centre.

DATTA National Conference, Melbourne – 6th till 8th December, at Swinburne University Hawthorn.

Craft Alive Shows ... Due to commitments that clash with the Craft Alive events in 2018, I shall not be participating in their events in Queensland in the coming twelve months. Watch for me at the Toowoomba event in February 2019. I'm also planning to return to their show in Rockhampton in '19, and Townsville too when their show is launched there.

For those of you in Victoria, make sure you catch up with our GC Teachers at Craft Alive shows down your way.

Workshops in 2018 ... Plans are already well under way for my workshops in Toowoomba and away from home next year. **Here's what is on the drawing board so far ...**

FOR FULL DETAILS,
CHECK MY WEBSITE:
www.genesiscreations.com.au

Download the registration form when available

- ✓ Toowoomba – in my home Studio – 15th till 20th March; then April, Oct, and Nov
- ✓ Albury – between 23rd and 26th April
- ✓ Tannum Sands – 22nd May
- ✓ Port Macquarie – 16th and 17th July
- ✓ Melbourne (Hawthorn) – 9th December

If you'd like to hold a workshop in *your* area, please contact me ASAP so we can arrange the details. There are still some spots available on my Year Planner. But it'd be best to get in quickly so you don't miss out.

Another Magazine Article has Gone to Press ... my project, 'Capturing Memories', is in the December issue of *Embellish*. This article shows how to convert a photo into a stencil, a skill helpful for people (like me!) who want to be creative but lack the ability to draw !! I've taken as my special memory a photo of my Nan's favourite rose, Queen Elizabeth, and made it into a stencil. Please let me know if you'd like to purchase these magazines, as those with my articles in them are now available through us at the newsagent's price of \$9.95 each (plus postage unless with an order.)

More good news about *Embellish* articles ... I've been booked to write four more projects. They'll be in their quarterly magazines starting with June '18 issue.



From photo to completed stencil – the 'how to' is in December *Embellish*



Making the Most of Our Painting Techniques: Colour Combing using our Flat range of Paints...

1. Using masking tape, prepare rectangles or other simple shapes within which you will apply the paints.
2. Place blobs or lines of your chosen paint colours on the masking tape, and close to the edge of it, but not on the fabric. I have used our Electric Flat colours in this sample.
3. Find a set square or a short (or broken off) plastic ruler. Place this above the colours on the tape and drag it firmly and evenly over the design area, pulling downward to deliver the paint colours across the fabric.
4. Repeat this in the opposite direction to fill the shape with colour.

NOTES: To create the vertical stripes of colour, I have worked firstly from the top downwards, then from the bottom upwards. Practice on a scrap of fabric first to give you a good idea of how much paint will be needed to fill (but not over-fill) your design area. Stencils can be used to fill in any blanks. They are of course the perfect enhancement for your design anyway!

And for those of you who are our Liquid Radiance fanatics – Try a “Triple Decker Salty Sandwich” ...

Create the Salty Sandwich in the usual way. [Missed this technique? Refer to *Concepts* Autumn 2017 issue, or ask me.] Then simply wet and squeeze out another piece of fabric the same size as the other two that form the sandwich and lay it on top. Touch it gently with your fingertips to start it working ... then wait (that's the hard bit!). It will pull the other colours through and you have another brilliant piece that goes perfectly with the other two for your projects.

Here's to another wonderfully creative year together in 2018! It'll be great to share it with you ...

